

**SMAUTOMATIC**

*Would roller shades look great in your home or office?*

*Well, in case you weren't already aware, SM Automatic offers a full line of motorized shades, with either light filtering or room darkening fabrics.*



**SMAUTOMATIC**

MOTORIZATION FOR INTERIOR WINDOW TREATMENTS

## Model 9300 Lift Systems with Light Filtering Roller Shades by Phifer

SheerWeave® by Phifer fabrics are sunscreen shade materials made in the USA from a variety of weaves and color designs and are designed to diffuse light, reduce glare, control heat gain, and provide UV protection. All Phifer SheerWeave® fabrics are ISO certified and meet or exceed flame retardant and bacteria/fungal resistant requirements. These fabrics are easy to maintain and can easily be cleaned using mild detergent. They are available in a variety of colors and openness factors. The openness factor (listed below by fabric in parenthesis) refers to the amount of light and heat allowed to enter thru the weave or mesh.

### Model 9300 with SheerWeave® 2000 / 2100

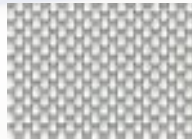
SheerWeave Style 2000 (5%), 2100 (10%), fabrics are full basket weave sunscreen shades made from vinyl-coated fiberglass yarns. All SheerWeave 2000 fabrics are GreenGuard certified.



P02  
White



P04  
White/Bone



P05  
White/Platinum



Q05  
Bone



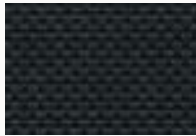
Q06  
Bone/Platinum



Q10  
Bronze



V04  
Platinum



V21  
Charcoal



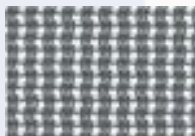
V22  
Charcoal/Gray



V24  
Charcoal/Chestnut

### Model 9300 with SheerWeave® 3000

SheerWeave Style 3000 (14%) fabrics are sunscreen mesh shades made from vinyl-coated fiberglass and polyester yarns.



P00  
Spanish Gray



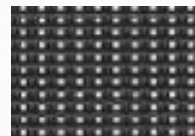
P01  
Pearl White



Q01  
Mushroom Sand



Q02  
Custard Cream



Q04  
Chocolate



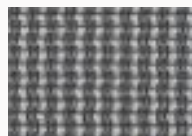
Q17  
Sand Dollar



Q18  
Espresso



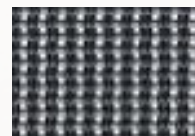
Q19  
Honey Sage



V00  
Dusty Grey



V01  
Pale Grey



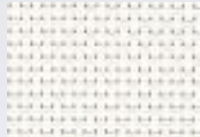
V02  
Ninja Grey



V18  
Mossy Green

## Model 9300 Lift Systems with Light Filtering Roller Shades

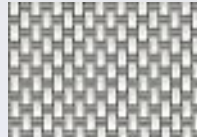
### Phifer SheerWeave® Style 4000/4100/4400



P06  
Chalk



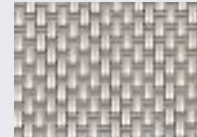
P07  
Alabaster



P10  
Granite



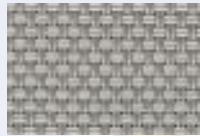
Q12  
Pebblestone



Q15  
Greystone



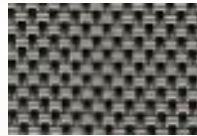
Q16  
Tobacco



V07  
Pewter



V10  
Ebony



V15  
Ash

### Phifer SheerWeave® Style 4800



P06  
Chalk



P07  
Alabaster



P75  
Pearl



Q97  
Sand



Q98  
Mocha



Q99  
Taupe



V10  
Ebony



V16  
Grey



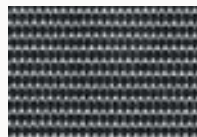
V59  
Fleece



V60  
Clay



V61  
Mink

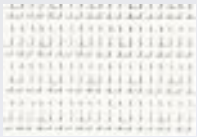


V62  
Flint



## Model 9300 Lift Systems with Light Filtering Roller Shades

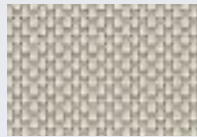
### Phifer SheerWeave® Style 5000



P59  
Bamboo Whitewash



P60  
Bamboo Birch



Q06  
Bone Platinum



Q43  
Marble Sand



Q45  
Moire Leather



Q46  
Bamboo Wheat



Q47  
Moire Mocha



Q48  
Bark Cedar



Q49  
Rattan Umber



Q50  
Bark Tiger Oak



Q51  
Wicker Mushroom



Q52  
Marble Slate



Q53  
Honeycomb Brown



Q93  
Cane Golden Straw



Q94  
Tweed Oatmeal



Q95  
Tweed Buckeye



Q96  
Thatch Wheatgrass



V21  
Charcoal

### Phifer SheerWeave® Style 7000



P62  
White



P63  
Birch



P64  
Sand



Q57  
Wheat



Q58  
Mushroom



V39  
Graphite



V40  
Onyx



V41  
Canyon

## Model 9300 Lift Systems with Room Darkening Roller Shades

**Vinyl Room Darkening** When room darkening is needed, an opaque treatment is required. This cloth is a 4 ply opaque: 1 ply fiberglass and 3 ply vinyl; and features characteristics of shadow free opacity, easy washability, and long wear. Available in 4 different textured patterns, with up to 10 decorator colors per pattern. Permanent flame resistance qualities (meets federal government specifications CCC-C-52e). Weight: 12 ounces per square yard.

**Flocke Opaque** A textured, opaque roller shade fabric. Composed of 48% fiberglass and 52% acrylic, this fabric is the designer's choice when it comes to opaque shades. Flocke's attractive texture offers a decorative alternative to standard opaque shades. Flame resistance according to NFPA 701 Small Scale, NFPA 701 Large Scale, and U.S. California Title 19. Weight: 14.75 ounces per square yard.

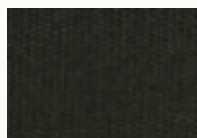
### 3G Mermet Flocke



600  
Blanc



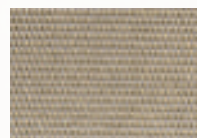
603  
Beige



606  
Noir



608  
Chartreux



609  
Loutre



614  
Petrole



615  
Cuivre



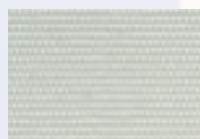
617  
Chene



618  
Mississippi



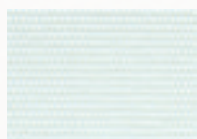
619  
Encre



623  
Sahel



625  
Coraline

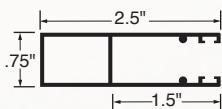


626  
Angora

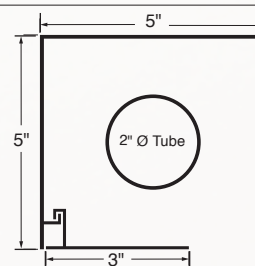


Options for both opaque and Sun control motorized shades (white finish only):

Side Channel



Fascia Box



## Model 9300 Lift Systems with Light Filtering Roller Shades by 3G Mermet

3G Mermet fabrics are sunscreen shade materials made from vinyl-coated fiberglass yarns in a variety of weaves and color designs and are designed to diffuse light, reduce glare, control heat gain, and provide UV protection. All 3G Mermet fabrics are ISO certified and meet or exceed flame retardancy requirements. These fabrics are easy to maintain and can easily be cleaned using mild detergent. They are available in a variety of colors and openness factors (listed below by fabric in parenthesis).

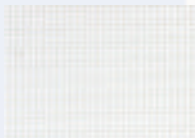
### Model 9300 with 3G E-Screen®

E-Screen Style 7501 (1%), 7503 (3%), 7505 (5%), & 7510 (10%), sunscreen mesh shades are made from vinyl-coated fiberglass yarns. All E-Screen fabrics are GreenGuard certified.

### Model 9300 with 3G M-Screen®

M-Screen Style 8503 (3%) & 8505 (5%) sunscreen mesh shades are made from vinyl-coated fiberglass yarns. All M-Screen fabrics are GreenGuard certified.

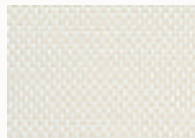
### 3G Mermet E-Screen and M-Screen



0202  
White/White



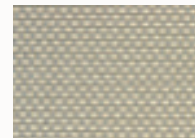
0207  
White/Pearl



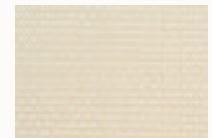
0220  
White/Linen



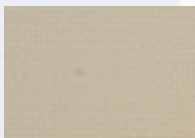
0707  
Pearl/Pearl



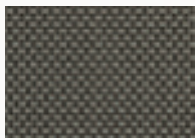
0720  
Pearl/Linen



2020  
Linen/Linen



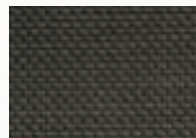
2022  
Linen/Stone



3001  
Charcoal/Grey



3006  
Charcoal/Bronze



3030  
Charcoal/Charcoal

M-Screen is also available  
in additional colors.



*Providing Exceptional Quality and Service  
Since 1982*

3351 Jack Northrop Ave., Hawthorne CA 90250-4426

Phone: 310-220-2600 Toll Free: 800-533-3040

Fax: 310-559-9764

Email: [sales@smautomatic.com](mailto:sales@smautomatic.com)

Web: [www.smautomatic.com](http://www.smautomatic.com)